

## Notes

.....

.....

.....

.....

.....

.....

.....

.....

.....

.....

.....



Cardiovascular  
Disease



Diabetes



Kidney  
Disease



Musculoskeletal  
Conditions



Respiratory  
Disease



Your Aboriginal Health Worker can  
provide you more information

## Upcoming appointments

Who

Date / / Time : am/pm

Bring

Who

Date / / Time : am/pm

Bring

Who

Date / / Time : am/pm

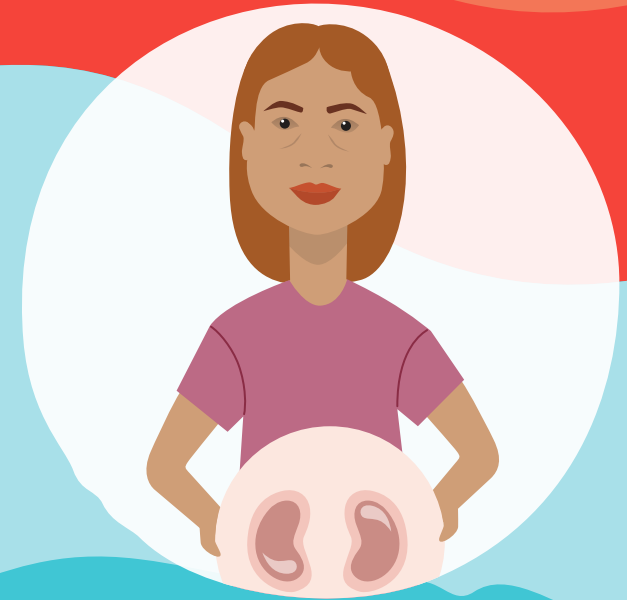
Bring

### Disclaimer

The information in this pamphlet is of a general nature only and not intended as medical advice.



Aboriginal  
Health & Medical  
Research Council  
of NSW



# Nephrology Nurse

Resource three of the




**Living Longer Stronger Resource Kit**

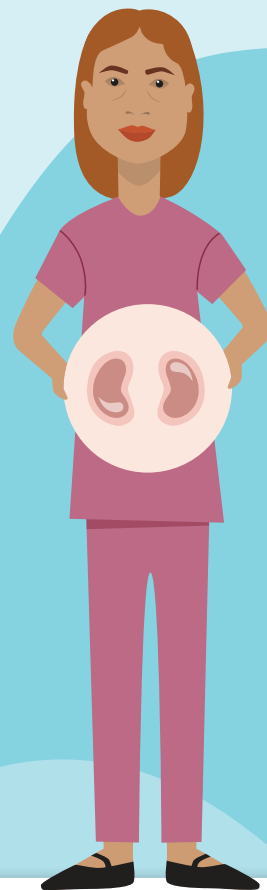
2nd edition

## Who are they?

A Nephrology Nurse provides specialised nursing care for people with chronic kidney disease and kidney failure. They educate about kidney disease and teach people how to manage dialysis – which is a treatment used to remove fluid and waste products from the body in people who do not have functioning kidneys.

Nephrology Nurses practice in the following health care settings:

- + Community clinics
- + Satellite dialysis centres 
- + Hospital In-patient dialysis centres 
- + Homecare (for home dialysis) 



## Nephrology Nurse

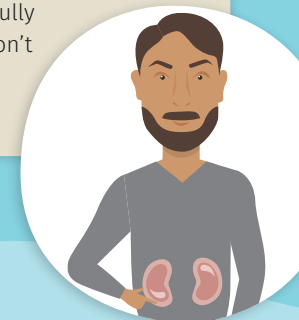
Provide advice and specialised care to people with kidney disease, including those on dialysis.

## What should I do before I meet my Nephrology Nurse?

- + If you require the care of a Nephrology Nurse, you will likely have lots of questions to ask them. You might wish to write down your questions, so you have all of your concerns addressed.
- + You will probably spend a lot of time with your Nephrology Nurse, and you may get to know them very well. It is likely you will learn a lot about yourself and how to best look after yourself.

## How much does it cost?

Costs to see a Nephrology Nurse should be included in the costs to see your Nephrologist. These costs may be partially or fully covered by Medicare, however don't hesitate to contact the service provider for more information.



## How can I access one?

A person with severe kidney disease and requiring treatment with dialysis will be likely to meet a Nephrology Nurse, which usually begins in a hospital. Nephrology Nurses may be found in both urban and rural settings.

## What to expect during the appointment?

- + There will be lots of things that happen before and during your appointments with a Nephrology Nurse, which may include going through dialysis.
- + You may also receive further education on how to look after yourself and best manage kidney disease.