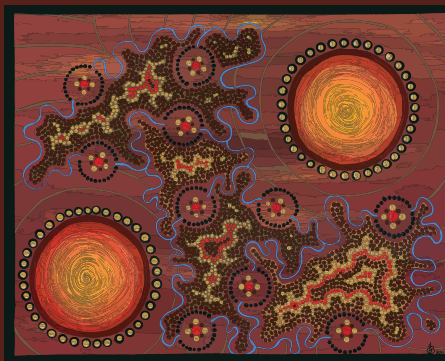
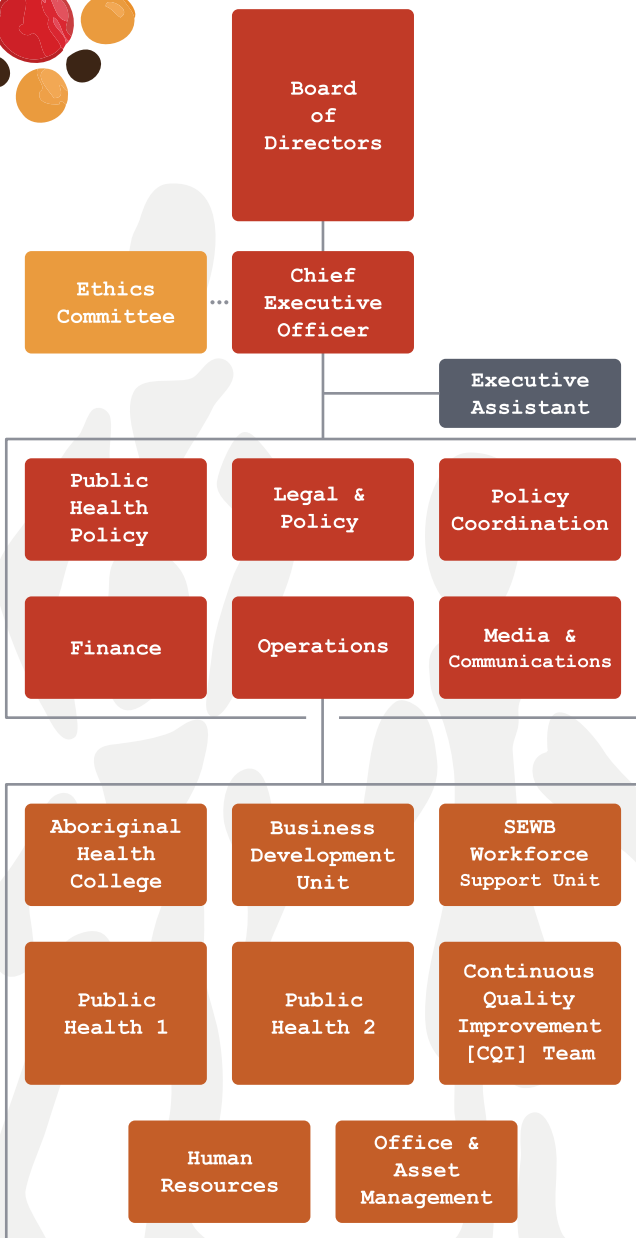


# AH&MRC Business Units



## Artwork

Jasmine Sarin is a proud Kamilaroi and Jerrinja woman from NSW. Her artwork reflects both her country and coastal influences.



## AH&MRC of NSW

### Location

Level 3, 66 Wentworth Ave  
Surry Hills, NSW, 2010

### Postal Address

PO Box 1565  
Strawberry Hills NSW 2012

### Contact

Phone: (02) 9212 4777

Fax: (02) 0212 7211

email: [ahmrc@ahmrc.org.au](mailto:ahmrc@ahmrc.org.au)

Website: [www.ahmrc.org.au](http://www.ahmrc.org.au)



## Aboriginal Health College

### Location

35 Harvey Street  
Little Bay NSW 2036

### Postal Address

PO Box 193  
Matraville NSW 2036

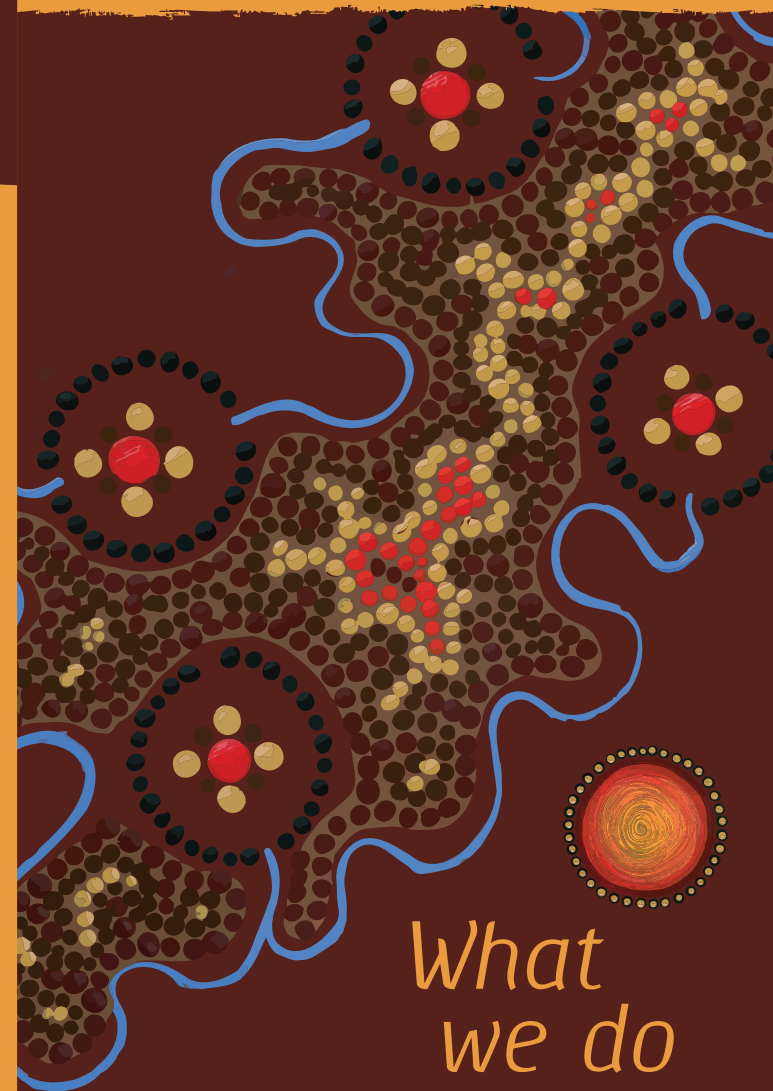
### Contact

Phone: (02) 9019 0730

Fax: (02) 9019 0736

email: [ahc@ahc.edu.au](mailto:ahc@ahc.edu.au)

Website: [www.ahc.edu.au](http://www.ahc.edu.au)



What  
we do

# The AH&MRC



The Aboriginal Health and Medical Research Council of New South Wales (AH&MRC) is the peak representative body and voice of Aboriginal communities on health in NSW. We represent our members, the Aboriginal Community Controlled Health Services (ACCHSs) that deliver culturally appropriate comprehensive primary health care to their communities.

The AH&MRC supports and promotes the wholistic view of Aboriginal health as defined by NACCHO:  
<http://www.naccho.org.au/definitions/abhealth.html>

The AH&MRC is governed by a Board of Directors, who are Aboriginal people elected by our members on a regional basis. We represent our members and their communities on Aboriginal health at state and national levels.

## Our Vision for Aboriginal Health



- Aboriginal Community Controlled Health Services are accessible, sustainable, adequately resourced, have a skilled workforce and meet the health needs and aspirations of Aboriginal people.
- Aboriginal people experience self-determination in all areas of their lives.
- Aboriginal people achieve physical, cultural, social and emotional wellbeing and contribute to the overall health, wellbeing and strength of their communities.

## Our Purpose

- Lead the Aboriginal health agenda for better policies, programs, services and practices.
- Ensure Aboriginal knowledge informs decision-making processes.
- Support, strengthen and sustain Aboriginal Community Controlled Health Services.

## Our Values

The AH&MRC values and commits to:

- Aboriginal culture and sovereignty;
- Aboriginal Community Control;
- Aboriginal wholistic health;
- Cultural respect, integrity and inclusion;
- Human rights and social justice;
- Quality and accountability;
- Genuine and meaningful partnership.



## Our Goals

1. To improve the health of Aboriginal people across NSW.
2. To improve Aboriginal people's access to culturally appropriate and high quality comprehensive primary health care services.
3. To increase acceptance and respect for Aboriginal Community Control as a best-practice model for achieving Aboriginal health improvement.
4. To achieve universal recognition of the AH&MRC as the lead representative organisation on Aboriginal health in NSW.
5. To strengthen the capacity of ACCHSs in NSW to deliver high quality, comprehensive, wholistic primary health care services.